

NS-630H 60x60mm 60x80mm

小型花样机

ELECTRONIC BAR TACKING-PATTERN SEWING MACHINE

电耗低，经济实用、线迹精美！

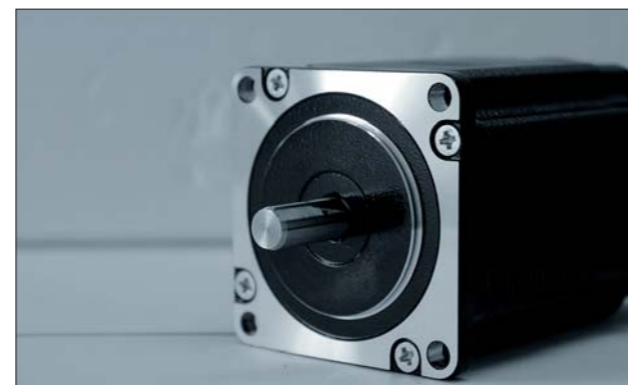
Energy-saving, beautiful stitch!



NS-630H

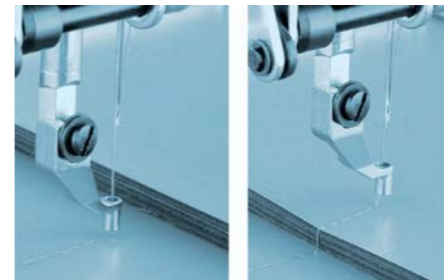


优质的进口旋梭、梭壳
Imported hooks



进口步进电机
Imported motor

产品特点 Product features



1. 压脚控制系统提供上下线张力一致的缝制

当面料的厚度改变时，由于间歇压脚上升量可以进行切换，因此间歇压脚总是按一定的间歇压力动作。这样就防止压脚抬得太高或太低，从而实现上下线一致的缝制。无需使用工具，在面板上或程序中输入数值即可设定压脚上升量。此外，根据不同的缝绉程序，使用户程序可以将间歇压脚的高度设定到理想的高度。

1. The presser foot system can always provide sewing by consistent tension.

When the thickness of fabric changes, there will be an intermittent pressure movement as the raising amount of the intermittent presser foot. It can prevent the presser foot to raise too high or too low. You can input the numerical value on the panel or in the program and set the amount of the presser foot without using tools. In addition, according to different sewing program, users can set intermittent presser foot to ideal height.

2. 均匀的大压脚压力

可对大压脚角度进行调节。大压脚的前后左右压力均衡使缝制物平稳放置以保证精确缝制。

2. Large presser foot with uniform pressure

Even pressure of the presser foot can adjust its angle. Balanced pressure of the presser foot in front and back, right and left directions can guarantee exact sewing.

4. 耗电低，经济实用

采用无传动损失的电脑直接驱动式小型节能马达。耗电量与传统机型相比削减了 50%，是市场上耗电最低的电脑花饰机。

4. Energy-saving, economical and practical

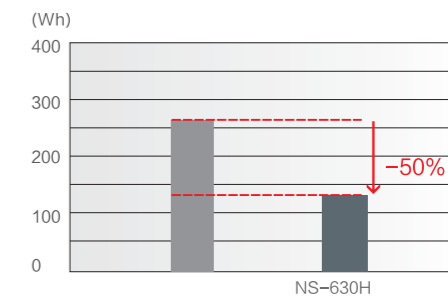
The power consumption is decreased by 50%, being the floriation machine with lowest power consumption.

3. 支持 USB 数据接口

支持 USB 数据接口接入，内存更大，存储更快捷。

3. USB data interface

support USB data interface access, memory larger, storage faster.



耗电量 Power consumption

缝制矩形图案 (Rectangular pattern): 60x99mm

针数 (Stitches): 106

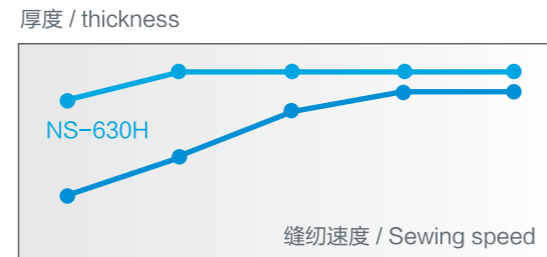
针距 (Stitch length): 3mm

缝绉速度 (Sewing speed): 2,500 rpm,

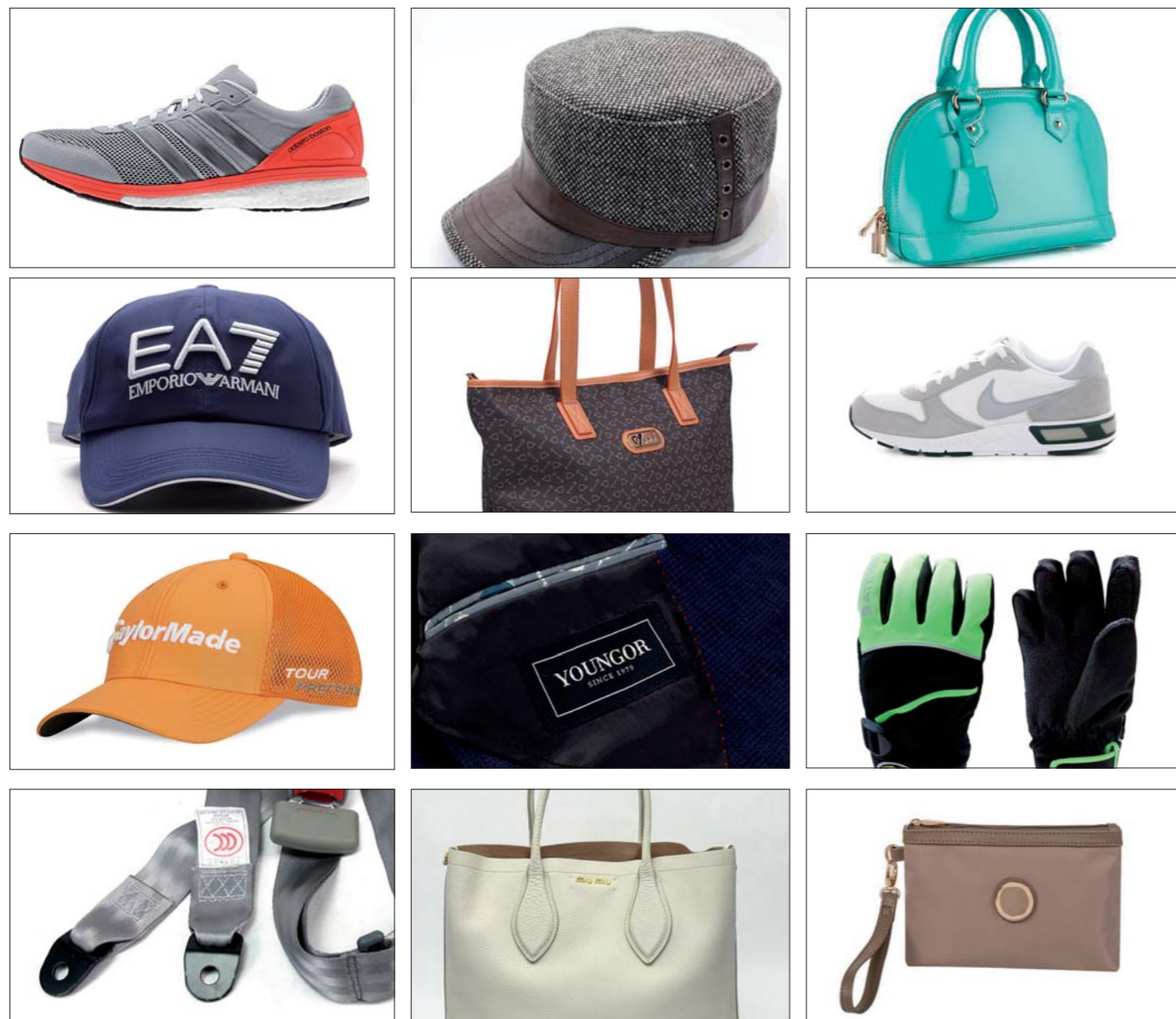
504 件 / 小时 (pieces/hour)

5. 采用强效马达 (550W), 即使在低速时也能产生较大机针贯穿力, 厚料的缝制也能切实进行。

5. Using the strong motor (550W), it can produce powerful perforation even if in low speed on thick materials.



应用实例 Application example



规格 Specifications

规格 Specification	NS-630H
用途 Use	套结 Bar tacking
最高缝纫速度 Max. sewing speed	3000 rpm
缝制区域(X × Y) Sewing area (X × Y)	最大Max. 80 × 60mm
送布方式 Feeding	间歇性送布(脉冲马达驱动方式) Intermittent feed (pulsed motor drive mode)
针距 Stitch length	0.05–12.7mm
最大针数 Max. number of stitches	5000针/1个图案 5000 needle / 1 pattern
供油方式 Oil supply	微量供油 Micro-oil supply
压脚驱动方式 Pressure foot drive	脉冲马达驱动方式 Pulsed motor drive mode
压脚上升量 Height of presser foot	最大Max. 17mm
使用旋梭 Hooks	半旋转标准旋梭 Caracol-Standard hook
扫线装置 Thread wiper device	标准装备 Standard equipment
切线装置 Thread trimmer device	标准装备 Standard equipment
夹线器 Thread nipper	选购件 Option
数据存储方式 Data storage	U盘/USB接口 Flash card (using SD card can add any pattern)
外部数据存储媒介 External data storage medium	U盘 U disk
循环程序数 Number of cyclic programs	最多可登录30个(各50个步骤) Max. Up to 30 (each 50 steps)
存储数据 Storing data	已设置89种图案(最多可追加512种图案, 追加总针数约在500000针以内)*2 Has set up 89 kinds of patterns (up to add up to 512 kinds of patterns, additional total needle number of about 500000 pin) * 2
马达 Motor	AC伺服马达550W(直接驱动) AC servo motor 550W(Direct drive)
电源 Power supply	单相Single phase 220V
重量 Weight	头部: 约57kg、操作面板: 约0.4kg、控制箱: 约9kg Head: about 57kg, operation panel: about 0.4kg, control box: about 9kg